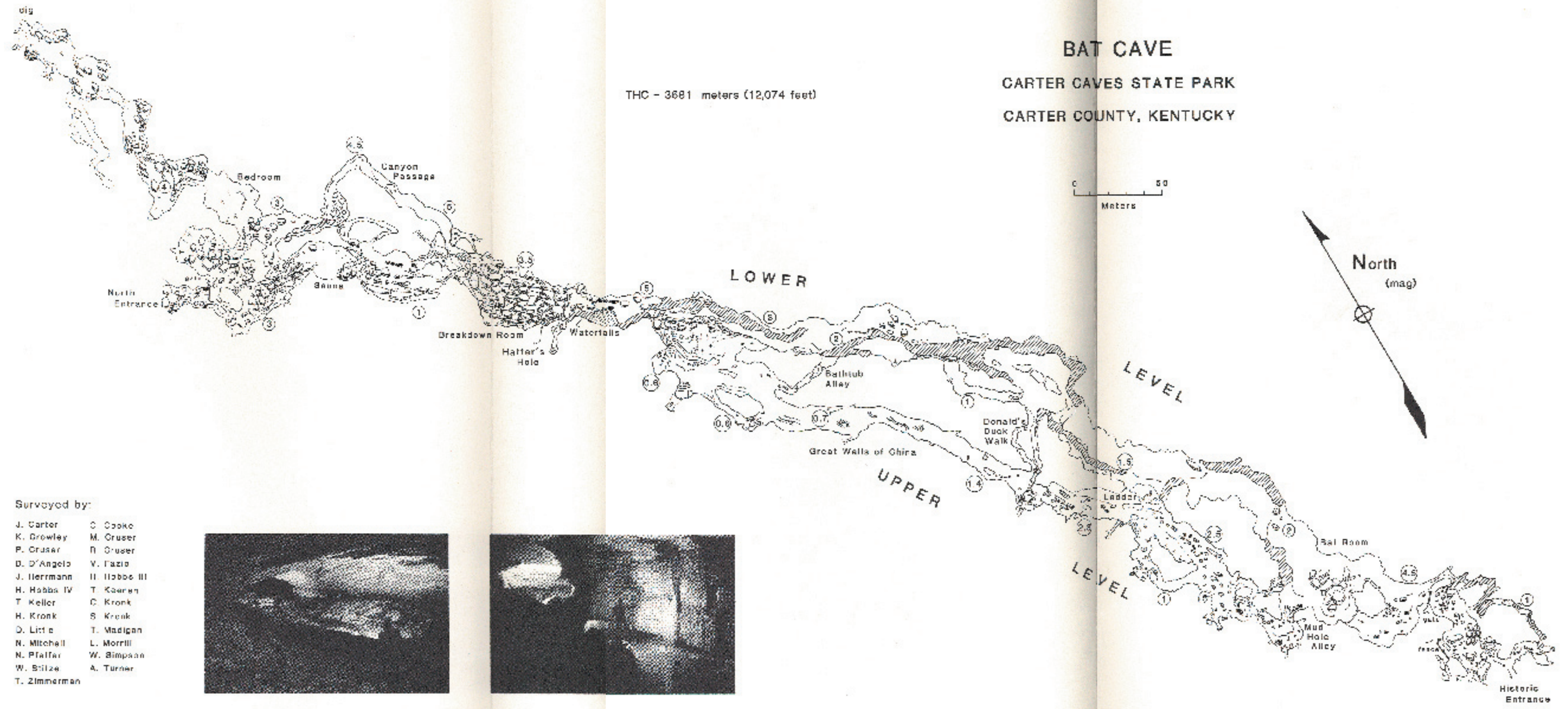
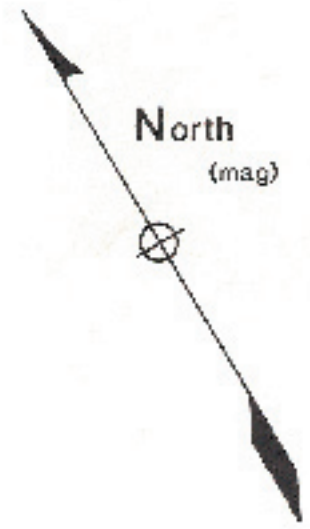


# BAT CAVE

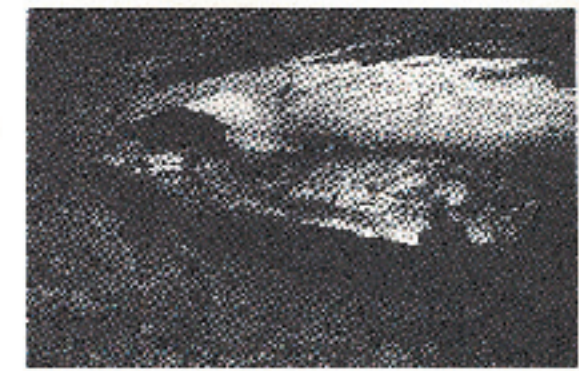
CARTER CAVES STATE PARK  
CARTER COUNTY, KENTUCKY

THC - 3681 meters (12,074 feet)



Surveyed by:

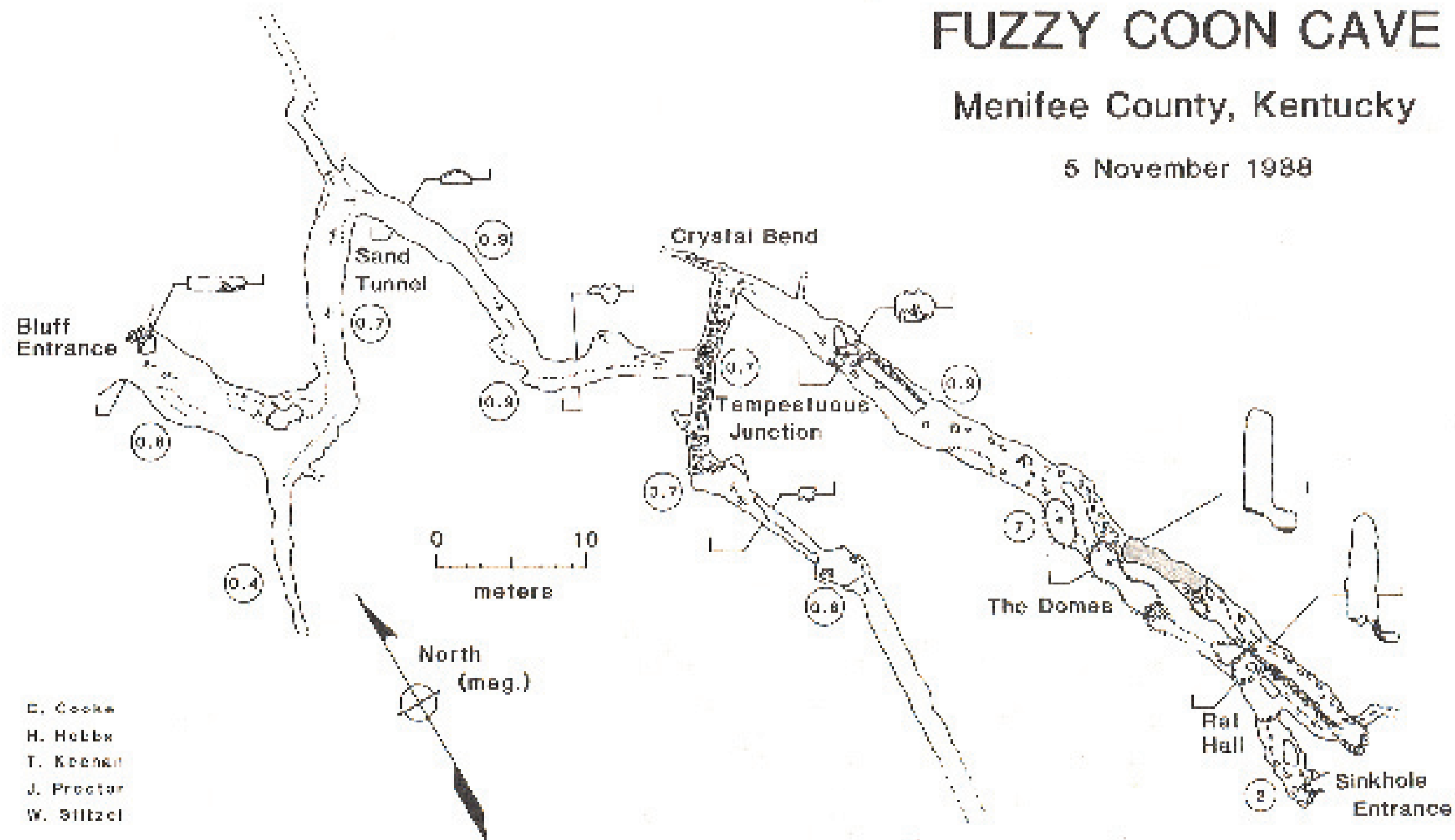
- |              |               |
|--------------|---------------|
| J. Carter    | C. Cooke      |
| K. Drowley   | M. Cruser     |
| P. Cruser    | B. Cruser     |
| D. D'Angelo  | V. Fazio      |
| J. Herrmann  | II. Hobbs III |
| H. Hobbs IV  | T. Kaeren     |
| T. Keller    | C. Kronk      |
| H. Kronk     | S. Kronk      |
| D. Little    | T. Madigan    |
| N. Mitchell  | L. Morrill    |
| N. Pfaffar   | W. Simpson    |
| W. Silze     | A. Turner     |
| T. Zimmerman |               |



# FUZZY COON CAVE

Menifee County, Kentucky

5 November 1988



E. Cooke  
H. Hobbs  
T. Keenan  
J. Proctor  
W. Siltzel